



ONLINE REGISTRATION

To join the webinar please register to this [LINK](#) or scan the QR CODE

Registrations are open until **15TH JANUARY 2021**

Registration is confirmed only once payment has been verified.

ITALIAN CME ACCREDITATION FOR ITALIAN PARTICIPANTS

DESTINATARI DELL'INIZIATIVA:

Professione: MEDICO CHIRURGO

Discipline: Anatomia patologica, Ginecologia e Ostetricia, Oncologia, Radioterapia, Patologia Clinica, Biochimica Clinica

Professione: BIOLOGO

Discipline: Biologia

Professione: TECNICO SANITARIO LABORATORIO BIOMEDICO

Disciplina: Tecnico sanitario laboratorio biomedico

Per l'acquisizione dei crediti ECM-FaD è necessario prendere parte ad almeno il 90% dei lavori scientifici in diretta calcolato sull'intero percorso formativo composto da n. 4 incontri. Al termine dei lavori scientifici di ogni incontro, verrà inviata un'e-mail con il link di collegamento per accedere al sito di Ecm-On Line. Sarà necessario compilare il questionario di valutazione della qualità percepita e rispondere correttamente ad almeno il 75% delle domande del questionario di valutazione dell'apprendimento.

Al percorso formativo sono stati assegnati: 12 CREDITI ECM

ID EVENTO: 246-309483

OBIETTIVO FORMATIVO: Documentazione clinica. Percorsi clinico-assistenziali diagnostici e riabilitativi, profili di assistenza - profili di cura

EACCME: An accreditation for each session has been made

LANGUAGE: English - No simultaneous translation



UNIVERSITÀ
DEGLI STUDI
DI PADOVA

PATRONAGE



European
Reference
Network
for rare or low prevalence
complex diseases

WITH THE UNCONDITIONAL SUPPORT OF:

diatech
pharmacogenetics



Agilent
Dako



AstraZeneca

DIAPATH



INFO & SUPPORT



For further information, please contact:



support@diagnostic-histopathology.com



+39 02 2444 9239

ORGANIZING SECRETARIAT AND CME PROVIDER

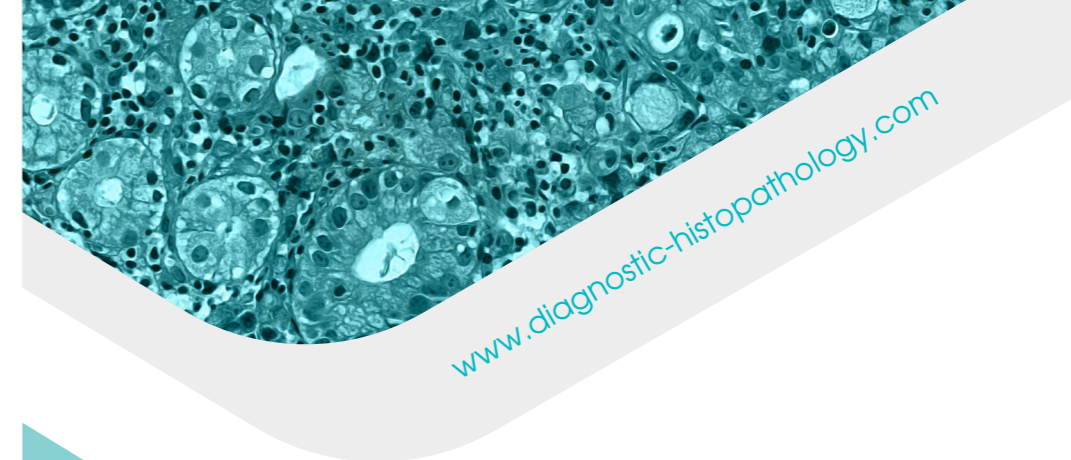
DOC CONGRESS



Questo è un
progetto C.A.R.E.



DOC CONGRESS S.r.l. - ID 246 Albo Provider Agenas
Via Dante, 153 - 20099 Sesto San Giovanni (MI)
Tel +39 02 2444 9239 - Fax +39 02 24449227
s.galbiati@doc-congress.com - www.doc-congress.com



www.diagnostic-histopathology.com

VIRTUAL MEETING

DIAGNOSTIC HISTOPATHOLOGY AND MOLECULAR PATHOLOGY OF GYNECOLOGICAL TUMORS



26TH JANUARY 2021
29TH JANUARY 2021
2ND FEBRUARY 2021
5TH FEBRUARY 2021



The conference
“**DIAGNOSTIC
HISTOPATHOLOGY AND
MOLECULAR PATHOLOGY OF
GYNECOLOGICAL TUMORS**”

will gather experts and participants from all over the world. The aim of the event is to present and discuss updated information on key topics in gynecological pathology to be applied to clinical practice in a variety of settings and to create awareness on the efficacy of multidisciplinary approaches.

IDENTIFIED PROFESSIONAL PRACTICE GAPS:

1. Increasing complexity of gynecological oncologic pathology related to the need of precision medicine
2. Increasing complexity of gynecological oncologic pathology related to extreme segmentation of tumor entities
3. Necessity to integrate morphology with new molecular findings
4. Necessity to provide medical oncologists with reliable prognostic and predictive biomarkers

LEARNING OBJECTIVES:

After successful completion of the educational activities, participants should be able to:

1. Recognize the diagnostic challenges of major subsets of oncologic gynecological pathology.
2. Correlate morphology with immunophenotypical and molecular findings.
3. Interpret morphologic findings in the appropriate clinical context.
4. Answer the need for more robust prognostic and predictive biomarkers
5. Understand future research directions and potentials for changing the clinicopathologic landscape in specific fields of gynecological oncologic pathology

SCIENTIFIC PROGRAM 🕒 16.00-18.00 ITALIAN TIME (GMT +1)



**I SESSION
26TH JANUARY 2021**

- 16.00 WELCOME AND INTRODUCTION
A.P. Dei Tos
- 16.05 Interpretation of benign and pre-cancerous endometrium
M.R. Nucci
- 16.35 Update on the classification of endocervical adenocarcinoma
M.R. Nucci
- 17.05 Clinical case
M.R. Nucci
- 17.35 Question&Answer
A.P. Dei Tos, M.R. Nucci
- 17.55 TAKE HOME MESSAGE
A.P. Dei Tos



**II SESSION
29TH JANUARY 2021**

- 16.00 WELCOME AND INTRODUCTION
A.P. Dei Tos
- 16.05 HPV versus non-HPV dependent pathways of vulvar neoplasia
B. Howitt
- 16.35 Molecular and morphologic classification of endometrial carcinoma
B. Howitt
- 17.05 Clinical case - *B. Howitt*
- 17.35 Question&Answer
A.P. Dei Tos, B. Howitt
- 17.55 TAKE HOME MESSAGE
A.P. Dei Tos



**III SESSION
2ND FEBRUARY 2021**

- 16.00 WELCOME AND INTRODUCTION
A.P. Dei Tos
- 16.05 Mullerian tumors of the ovary: Primary or secondary?
B. Howitt
- 16.35 Update on uterine mesenchymal neoplasia
B. Howitt
- 17.05 Clinical case - *B. Howitt*
- 17.35 Question&Answer
A.P. Dei Tos, B. Howitt
- 17.55 TAKE HOME MESSAGE
A.P. Dei Tos



**IV SESSION
5TH FEBRUARY 2021**

- 16.00 WELCOME AND INTRODUCTION
A.P. Dei Tos
- 16.05 Mesenchymal lesions of the lower female genital tract - *M.R. Nucci*
- 16.35 Mucinous tumours of the ovary: primary or secondary
M.R. Nucci
- 17.05 Clinical case
M.R. Nucci
- 17.35 Question&Answer
A.P. Dei Tos, M.R. Nucci
- 17.55 TAKE HOME MESSAGE
A.P. Dei Tos

COURSE DIRECTOR:

ANGELO PAOLO DEI TOS
Professor of Pathology, Director of Pathology Department of Medicine, University of Padua School of Medicine, Padova, Italy

SCIENTIFIC COMMITTEE:

MATTEO FASSAN
Associate Professor of Pathology University of Padua School of Medicine, Padova, Italy

MARTA SBARAGLIA
Medical Director of Pathology Department of Medicine, University of Padua School of Medicine, Padova, Italy

SPEAKERS:

MARISA ROSE NUCCI
Professor Pathology Harvard Medical School, Pathologist Department of Pathology, Division of Women's and Perinatal Pathology, Brigham and Women's Hospital, Boston, Massachusetts USA

BROOKE HOWITT
Assistant Professor of Pathology, Stanford University Medical Center, Department of Pathology Stanford, California, USA